

International Technical Service Bulletin

NUMBER: I18-803-02

GROUP: Driveability

DATE: Jun. 10, 2002

This bulletin is supplied as technical information only and is not an authorization for repair. No part of this publication may be reproduced, stored in a retrieval system, or transmitted, in any form or by any means, electronic, mechanical, photocopying, or otherwise, without written permission of DaimlerChrysler Corporation.

SUBJECT:

Engine Will Not Respond To Throttle Input

OVERVIEW:

This bulletin involves selectively erasing and reprogramming the Powertrain Control Module (PCM) with new software.

NOTE: A CERTIFICATE OF CONFORMITY MUST BE COMPLETED FOR VEHICLES MODIFIED BY THIS BULLETIN PRIOR TO SALE/REGISTRATION.

MODELS:

2002 (PG) PT Cruiser (International Markets)
2001 - 2002 (PL) Neon (International Markets)

NOTE: THIS BULLETIN APPLIES TO VEHICLES EQUIPPED WITH A 1.6L ENGINE (SALES CODE EJD).

NOTE: THE PREFERRED WAY TO SELECT THE CORRECT SOFTWARE IS BY ENTERING THE CURRENT PCM PART NUMBER INTO THE ISIS FLASH CARD MAKER PROGRAM. THE REVISED SOFTWARE WILL BE AVAILABLE ON ISIS CD 2109 OR HIGHER.

SYMPTOM/CONDITION:

While driving vehicle engine throttle response is lost, electronic throttle control lamp in cluster is flashing and the check engine light is illuminated with Diagnostic Trouble Code (DTC) P2101 set in the powertrain control module (PCM).

DIAGNOSIS/REPAIR PROCEDURES:

Using the Diagnostic Scan Tool (DRB III[®]) with the appropriate Diagnostic Procedures, verify all engine/transmission systems are functioning as designed. If other Diagnostic Trouble Codes (DTC's) are present, record them on the repair order and repair as necessary before proceeding further with this bulletin. If the condition(s) can be duplicated DTC P2101 is set in the PCM, perform the Repair Procedure.

PARTS REQUIRED:

| Qty. | Part No. | Description |
|------|------------|------------------------------------|
| 1 | 05011058AA | Label - Authorized Software Update |

EQUIPMENT REQUIRED:

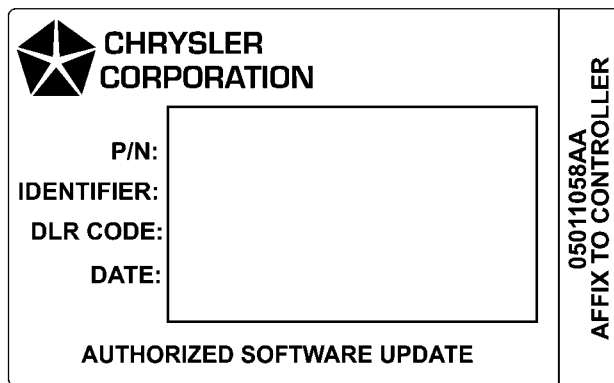
| | |
|-------------|--------------------------------|
| CH6000 | Scan Tool (DRB III®) |
| CH7000/7001 | J1962 Cable |
| | ISIS CD Series #2108 or Higher |

REPAIR PROCEDURE:

1. Update the DRB III® (with or without a card) using the Make Flash Card Update Program.
2. Use the following criteria to select the flash:
 - a. Select 2001/2002 Model Year.
 - b. Select PG/PL Body Style.
 - c. Select 1.6L engine.
 - d. Select the appropriate Engine Flash.
3. Follow the instructions on the DRB III® screen and update the PCM.

NOTE: THE FOLLOWING STEP IS REQUIRED BY LAW.

4. Type the necessary information on the “Authorized Software Update Label” p/n 05011058AA. Attach the label to the PCM and cover the label with the clear plastic overlay (Fig. 1).



80c810d2

Fig. 1 AUTHORIZED SOFTWARE UPDATE LABEL

| ENGINE | IDENTIFIER |
|----------|------------|
| PL, 1.6L | SMPAA3 |
| PL, 1.6L | SMPAB3 |
| PL, 1.6L | SMPAC3 |
| PL, 1.6L | SMPAD3 |

| | |
|----------|--------|
| PG, 1.6L | ENFAB3 |
| PG, 1.6L | ENFAC3 |

POLICY:

Reimbursable within the provisions of the warranty.

TIME ALLOWANCE:

| Labor Operation No: | Description | Amount |
|---------------------|-------------|----------|
| 08-19-48-95 | Flash PCM | 0.4 Hrs. |

FAILURE CODE:

| | |
|----|--------------|
| FM | Flash Module |
|----|--------------|