

# Technical Service Bulletin

**NUMBER:** 19-02-00 Rev. A

**GROUP:** Steering

**DATE:** July 28, 2000

*This bulletin is supplied as technical information only and is not an authorization for repair. No part of this publication may be reproduced, stored in a retrieval system, or transmitted, in any form or by any means, electronic, mechanical, photocopying, recording, or otherwise, without written permission of DaimlerChrysler Corporation.*

**THIS BULLETIN SUPERSEDES TECHNICAL SERVICE BULLETIN 19-02-00 DATED MARCH 3, 2000, WHICH SHOULD BE REMOVED FROM YOUR FILES. ALL REVISIONS ARE HIGHLIGHTED WITH **\*\*ASTERISKS\*\*** AND INCLUDE ADDITIONAL MODELS AND MODEL YEARS.**

***SUBJECT:***

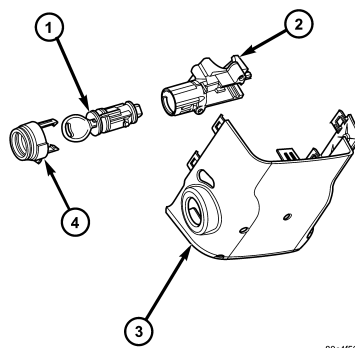
Ignition Lock Cylinder Service

***MODELS:***

2001	(PT)	PT Cruiser
2000 - <b>**2001**</b>	(PL)	Neon
2000	(JA)	Cirrus/Stratus
<b>**2001</b>	(JR)	Stratus Sedan/Sebring Sedan/Sebring Convertible <b>**</b>
2000	(JX)	Sebring Convertible
2000 - <b>**2001**</b>	(XJ)	Cherokee
2000 - <b>**2001**</b>	(TJ)	Wrangler

***DISCUSSION:***

Recent changes to the ignition lock cylinder have resulted in the removal of a chamfer on the lock cylinder retaining pin. This may cause the pin to hang up on the plastic trim ring when the lock cylinder is removed. If this situation is encountered on any of the models listed above, it may be necessary to remove the trim ring prior to removing the lock cylinder. This is done by unseating the retaining tabs on the trim ring and removing it. The lock cylinder can then be removed without any Interference (See Figure 1). Future models will modify the lock housing to eliminate this condition.



80c4f56a

**FIGURE 1**

- 1 - IGNITION LOCK CYLINDER**
- 2 - LOCK HOUSING**
- 3 - SHROUD**
- 4 - TRIM RING**

***POLICY:*** Information Only