

# INTRODUCTION

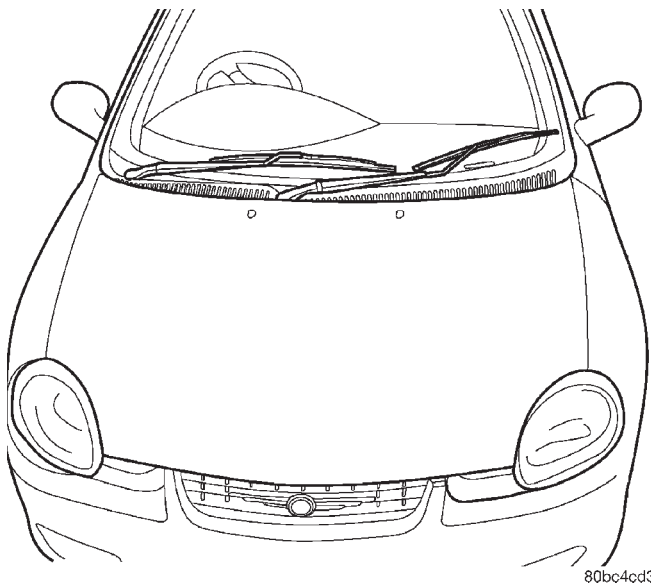
## TABLE OF CONTENTS

	page		page
<b>GENERAL INFORMATION</b>		<b>E-MARK LABEL</b> .....	2
VEHICLE IDENTIFICATION NUMBER .....	1	<b>MANUFACTURER PLATE</b> .....	3

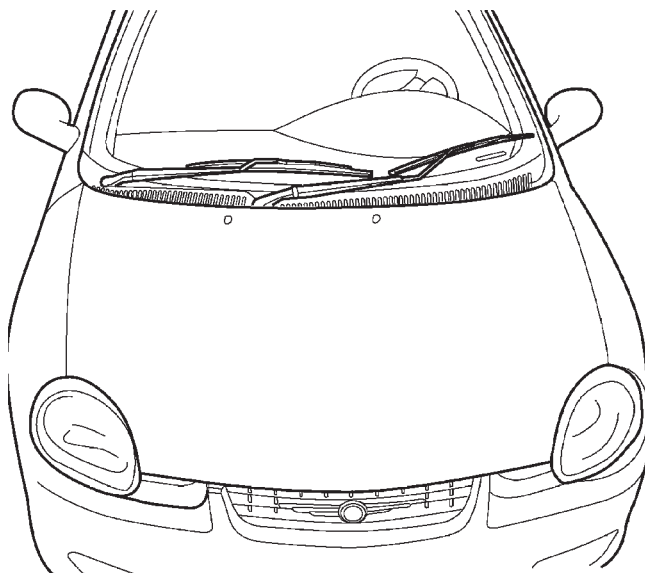
### GENERAL INFORMATION

#### VEHICLE IDENTIFICATION NUMBER

The Vehicle Identification Number (VIN) can be viewed through the windshield at the upper left corner of the instrument panel next to the left A-pillar on left-hand-drive and right-hand-drive vehicles (Fig. 1) (Fig. 2). The VIN consists of 17 characters in a combination of letters and numbers that provide specific information about the vehicle. Refer to the VIN Decoding Information Table to interpret VIN code.



**Fig. 1 VIN Plate Location – R. H. D.**



80bce8e1

**Fig. 2 V. I. N. Plate Location – L. H. D.**

#### VIN CHECK DIGIT

To protect the consumer from theft and possible fraud the manufacturer is required to include a check digit at the ninth position of the VIN. The check digit is used by the manufacturer and government agencies to verify the authenticity of the vehicle and official documentation. The formula to use the check digit is not released to the general public.

GENERAL INFORMATION (Continued)

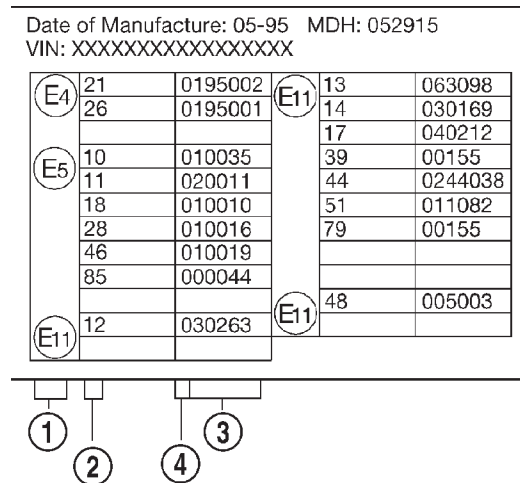
VIN DECODING INFORMATION

POSITION	INTERPRETATION	CODE = DESCRIPTION
1	Country of origin	1 = United States
2	Make	C = Chrysler
3	Vehicle Type	3 = Passenger Car
4	Passenger Safety	E = Active Restraints, Driver and Passenger Airbags
5	Car Line	S = Neon BUX L. H. D. V = Neon BUX R. H. D.
6	Series	M = DD5 5-Speed Manual Transmission A = 3-Speed Automatic Transmission
7	Body Style	7 = 4 Door Pillared Hardtop
8	Engine	C = 2.0L 4 Cyl. 16V SOHC A = 1.8L 4 Cyl. 16V SOHC
9	Check Digit	See explanation in this section.
10	Model Year	Y = 2000
11	Assembly Plant	D = Belvedere Assembly
12 Thru 17	Build Sequence	6 Digit number assigned by assembly plant

**E-MARK LABEL**

An E-mark Label (Fig. 3) is located on the rear shut face of the driver's door. The label contains the following information:

- Date of Manufacture
- Month-Day-Hour (MDH)
- Vehicle Identification Number (VIN)
- Country Codes
- Regulation Number
- Regulation Amendment Number
- Approval Number



80a47175

**Fig. 3 E-Mark Label**

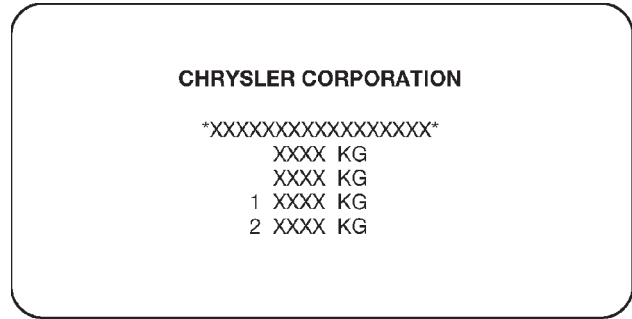
- 1 - Country Code
- 2 - Regulation Number
- 3 - Approval Number
- 4 - Amendment Number

GENERAL INFORMATION (Continued)

**MANUFACTURER PLATE**

The Manufacturer Plate (Fig. 4) is located in the engine compartment on the right side of the radiator closure panel crossmember adjacent. The plate contains five lines of information:

1. Vehicle Identification Number (VIN)
2. Gross Vehicle Mass (GVM)
3. Gross Train Mass (GTM)
4. Gross Front Axle Rating (GFAR)
5. Gross Rear Axle Rating (GRAR)



80a47179

**Fig. 4 Manufacturer Plate**

