

POWER MIRRORS

TABLE OF CONTENTS

	page		page
GENERAL INFORMATION		POWER FOLD AWAY MIRROR MOTOR	1
INTRODUCTION	1	REMOVAL AND INSTALLATION	
DIAGNOSIS AND TESTING		POWER FOLD-AWAY MIRROR SWITCH	1
POWER FOLD AWAY MIRROR SWITCH TEST. . .	1	POWER FOLD-AWAY MIRROR.	2

GENERAL INFORMATION

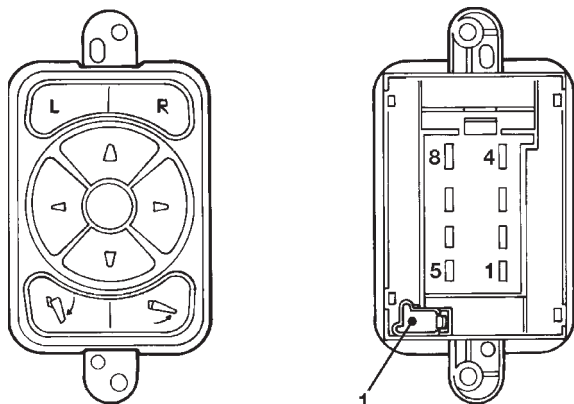
INTRODUCTION

These vehicles may be equipped with Power Fold Away Mirrors. The vehicle has an additional switch in the switch pod that controls the folding function of the mirror assembly (Fig. 1).

All vehicles are equipped with a Ignition-Off Draw Fuse, and they are disconnected when the vehicles are originally shipped from the factory. Disconnecting this fuse will help prevent the battery from discharge during storage. The fuse is located in Power Distribution Center (PDC) refer to the cover for proper location.

This fuse is included in the power mirror circuitry and should be checked if the mirrors are inoperative.

The vehicle mirror circuitry is powered from the accessory feed circuit and protected by a 15 amp circuit breaker and power mirror relay. The relay provides for the switching of the mirror. The circuit breaker and mirror relay are located in the inner door panel wire harness.



80a592bc

Fig. 1 Power Fold Away Mirror Switch

DIAGNOSIS AND TESTING

POWER FOLD AWAY MIRROR SWITCH TEST

(1) Remove power mirror switch from the door trim panel. Refer to the switch removal and installation procedure in this group.

(2) Using an ohmmeter, test for continuity between the terminals of the switch as shown in the Power Fold Away Mirror Switch Test (Fig. 2).

(3) If test results are not obtained as shown in (Fig. 2), replace the switch.

Refer to Group 8W, Wiring Diagrams for a complete schematic of the power mirror circuitry.

POWER FOLD AWAY MIRROR MOTOR

The power fold away mirror motor is incorporated into the mirror assembly. If the motor proves to be inoperative the entire mirror assembly must be replaced. Refer to the mirror removal and installation procedure in this group for detailed instructions.

(1) Remove the power mirror switch from the door trim panel. Refer to the removal and installation procedure in this group.

(2) Disconnect the mirror switch electrical connector.

(3) Using two jumper wires, one connected to a 12 volt source, and the other connected to a good body ground. Refer to the Mirror Switch Circuits (Fig. 3) and check for the appropriate mirror responses.

(4) If test results are not obtained as shown in (Fig. 3), check for an open or shorted circuit, or replace mirror / motor assembly as necessary.

Refer to Group 8W, Wiring Diagrams for a complete wiring schematic of the power mirror circuitry.

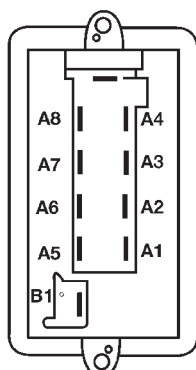
REMOVAL AND INSTALLATION

POWER FOLD-AWAY MIRROR SWITCH

REMOVAL

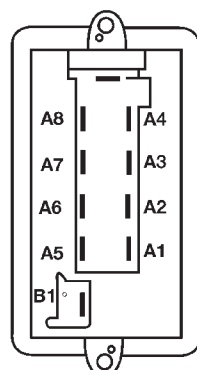
- (1) Disconnect the negative battery cable.

REMOVAL AND INSTALLATION (Continued)



MIRROR SWITCH CONTINUITY	
Mirror Selector Knob in "L" Position	
MOVE LEVER	CONTINUITY BETWEEN
▲	PINS A-2 AND A-8 PINS A-1 AND B-1 PINS A-1 AND A-5
▶	PINS A-2 AND A-6 PINS A-1 AND A-7
▼	PINS A-2 AND A-5 PINS A-1 AND A-8 PINS A-1 AND B-1
◀	PINS A-2 AND A-7 PINS A-1 AND A-6
Mirror Selector Knob in "R" Position	
MOVE LEVER	CONTINUITY BETWEEN
▲	PINS A-2 AND A-4 PINS A-1 AND B-1 PINS A-1 AND A-5
▶	PINS A-2 AND A 6 PINS A-1 AND A-3
▼	PINS A-2 AND A-5 PINS A-1 AND B-1 PINS A-1 AND A-4
◀	PINS A-1 AND A-6 PINS A-2 AND A-5
Mirror Folding Position	
OUT	PINS A- 1 AND A-5 PINS A- 2 AND B-1
IN	PINS A- 1 AND B-1 PINS A- 2 AND A-5

80a592bf



MIRROR SWITCH CONTINUITY	
Mirror Selector Knob in "L" Position	
MOVE LEVER	CONTINUITY BETWEEN
▲	PINS A-2 AND A-8 PINS A-1 AND B-1 PINS A-1 AND A-5
▶	PINS A-2 AND A-6 PINS A-1 AND A-7
▼	PINS A-2 AND A-5 PINS A-1 AND A-8 PINS A-1 AND B-1
◀	PINS A-2 AND A-7 PINS A-1 AND A-6
Mirror Selector Knob in "R" Position	
MOVE LEVER	CONTINUITY BETWEEN
▲	PINS A-2 AND A-4 PINS A-1 AND B-1 PINS A-1 AND A-5
▶	PINS A-2 AND A 6 PINS A-1 AND A-3
▼	PINS A-2 AND A-5 PINS A-1 AND B-1 PINS A-1 AND A-4
◀	PINS A-1 AND A-6 PINS A-2 AND A-5
Mirror Folding Position	
OUT	PINS A- 1 AND A-5 PINS A- 2 AND B-1
IN	PINS A- 1 AND B-1 PINS A- 2 AND A-5

80a592bf

Fig. 2 Power Fold Away Mirror Switch Test

(2) Remove the switch bezel from the drivers door panel (Fig. 4). Gently pry the bezel straight up to unsnap the retaining clips.

(3) Disconnect the power mirror multi-function switch electrical connector (Fig. 5).

(4) Remove the (2) switch retaining screws and remove the switch from the switch bezel (Fig. 5).

INSTALLATION

(1) Connect the power mirror multi-function switch electrical connector (Fig. 6).

(2) Verify switch / mirror operation.

(3) Position the switch in the switch bezel and install the (2) retaining screws (Fig. 6).

(4) Install the switch bezel assembly on the door trim panel.

(5) Connect the negative battery cable.

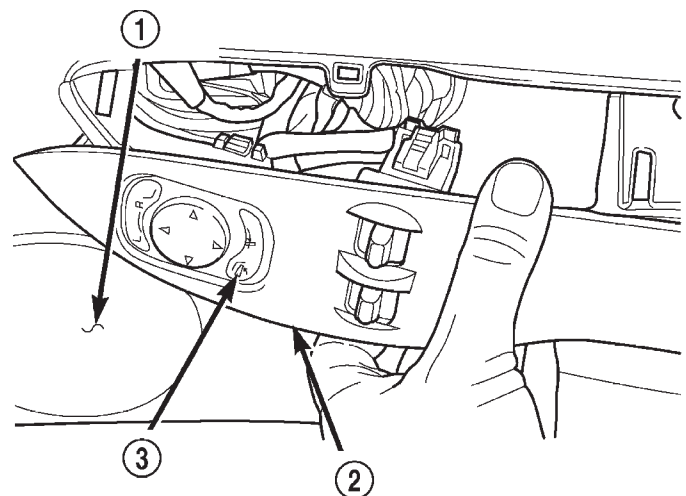
POWER FOLD-AWAY MIRROR

REMOVAL

(1) Disconnect the negative battery cable.

(2) Remove the appropriate front door trim panel. Refer to Group 23, BODY for the procedure.

Fig. 3 Power Fold Away Mirror Switch Circuits

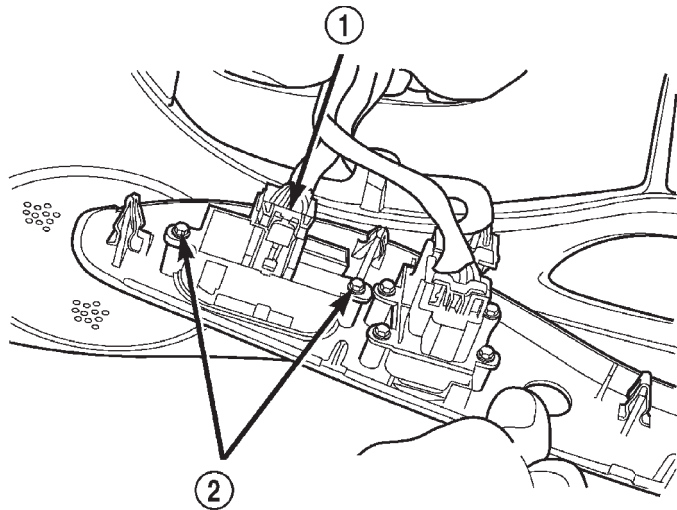


80bc4cbf

Fig. 4 Power Fold-Away Mirror Switch

- 1 - RIGHT FRONT DOOR TRIM PANEL
- 2 - SWITCH BEZEL
- 3 - POWER FOLD-AWAY MIRROR SWITCH

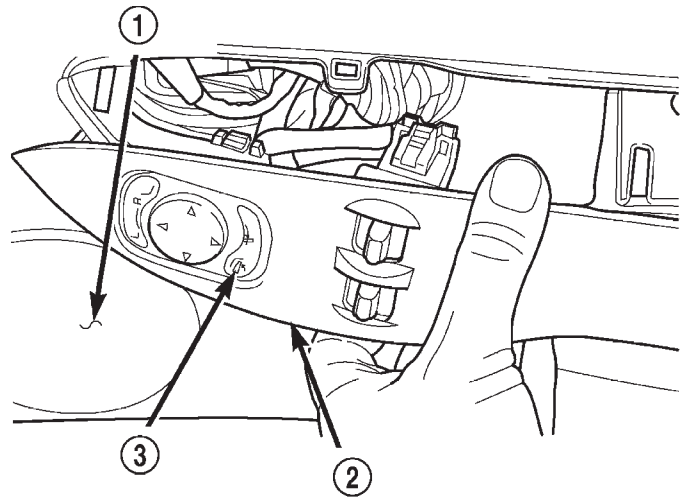
REMOVAL AND INSTALLATION (Continued)



80bc4cc0

Fig. 5 Power Fold-Away Mirror Switch Mounting

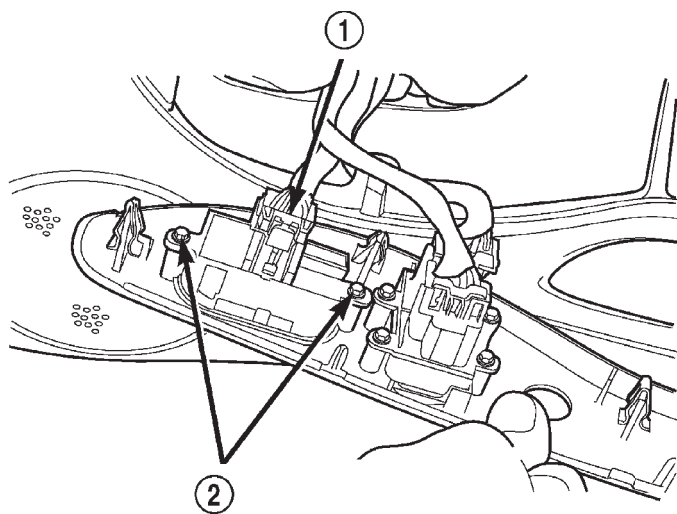
- 1 - POWER FOLD-AWAY MIRROR SWITCH ELECTRICAL CONNECTOR
- 2 - POWER FOLD-AWAY MIRROR SWITCH RETAINING SCREWS



80bc4cbf

Fig. 7 Power Fold-Away Mirror Switch

- 1 - RIGHT FRONT DOOR TRIM PANEL
- 2 - SWITCH BEZEL
- 3 - POWER FOLD-AWAY MIRROR SWITCH



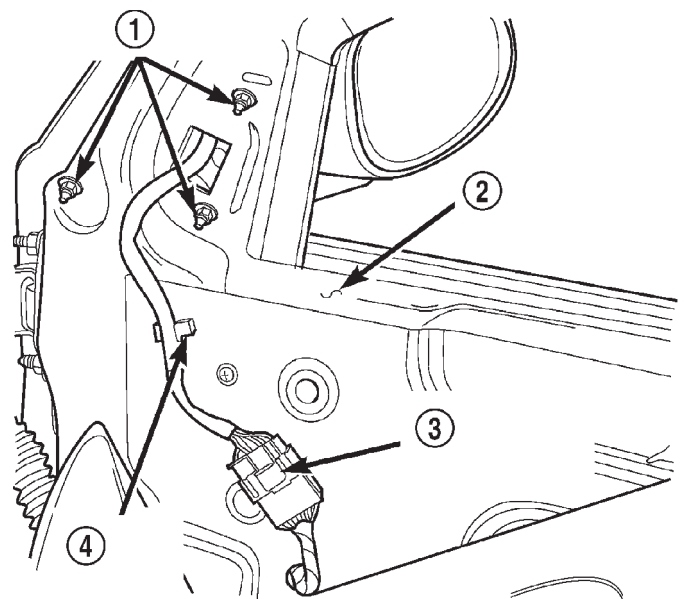
80bc4cc0

Fig. 6 Power Fold-Away Mirror Switch Mounting

- 1 - POWER FOLD-AWAY MIRROR SWITCH ELECTRICAL CONNECTOR
- 2 - POWER FOLD-AWAY MIRROR SWITCH RETAINING SCREWS

(3) Disconnect the power fold-away mirror electrical harness and connector (Fig. 8).

(4) Remove the (3) power fold-away mirror retaining nuts and remove the mirror from the vehicle (Fig. 8).



80bc4cc1

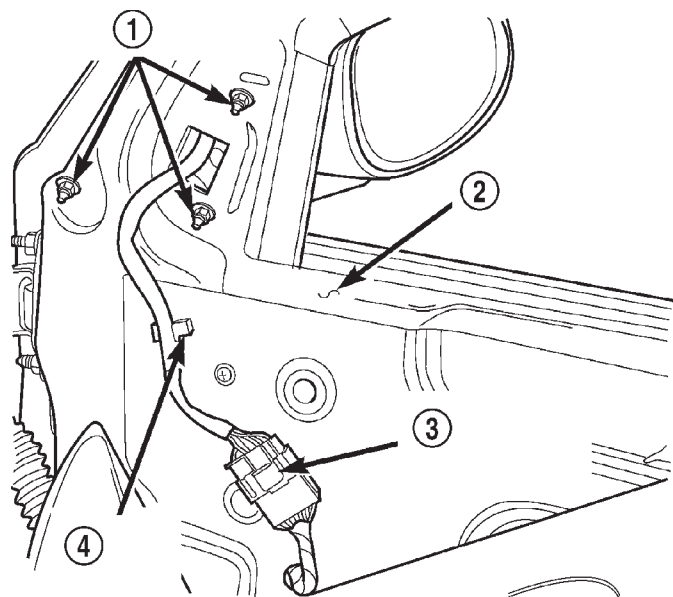
Fig. 8 Power Fold-Away Mirror Mounting - Right Side

- 1 - POWER MIRROR RETAINING NUTS
- 2 - RIGHT FRONT DOOR
- 3 - POWER MIRROR ELECTRICAL CONNECTOR
- 4 - WIRE HARNESS PUSHPIN

REMOVAL AND INSTALLATION (Continued)

INSTALLATION

(1) Position the mirror and install the (3) power fold-away mirror retaining nuts (Fig. 9). Torque the nuts to 20 N·m (177 in. lbs.).



80bc4cc1

Fig. 9 Power Fold-Away Mirror Mounting - Right Side

- 1 - POWER MIRROR RETAINING NUTS
- 2 - RIGHT FRONT DOOR
- 3 - POWER MIRROR ELECTRICAL CONNECTOR
- 4 - WIRE HARNESS PUSHPIN

(2) Connect the power fold-away mirror electrical connector and secure wire harness pushpin (Fig. 9).

(3) Verify mirror operation.

(4) Install the front door trim panel. Refer to Group 23, BODY for the procedure.

(5) Connect the negative battery cable.