

AUDIO SYSTEM

TABLE OF CONTENTS

	page		page
GENERAL INFORMATION		REMOVAL AND INSTALLATION	
INTRODUCTION	1	CD CHANGER	7
DESCRIPTION AND OPERATION		FRONT DOOR SPEAKER	8
INTERFERENCE ELIMINATION	1	INSTRUMENT PANEL SPEAKER(S)	8
DIAGNOSIS AND TESTING		MAST and ANTENNA ASSEMBLY	8
AUDIO DIAGNOSTIC TEST PROCEDURES	1	RADIO	9
TESTING	1	REAR SHELF SPEAKER(S)	10
BENCH TEST FOR ANTENNA MALFUNCTION	7		

GENERAL INFORMATION

INTRODUCTION

Operating instructions for the factory installed audio systems can be found in the Owner's Manual provided with the vehicle.

The vehicles are equipped with an Interior (Ignition Off Draw) fuse in the Power Distribution Center located in the engine compartment. After the Interior (IOD) fuse or battery has been disconnected the clock will require resetting. The radio station presets have a nonvolatile memory and will retain the preset stations after a battery disconnect.

The available radio options are:

- AM/FM Stereo Cassette w/Clock
- AM/FM/CD
- AM/FM Cassette w/CD Changer Controls and Display
- CD/4 Disc Changer - In-Dash (used w/Radio CD Changer Controls)

DESCRIPTION AND OPERATION

INTERFERENCE ELIMINATION

The radio utilizes a ground wire plugged on to a blade terminal and is bolted to the radio chassis. Both connector and terminal should be securely attached. The engine has two separate ground straps to suppress ignition noise which may interfere with radio reception.

- Left engine mount clip on strap
- Engine to shock tower reinforcement

Inductive type spark plug cables in the high tension circuit of the ignition system complete the interference suppression. Faulty or deteriorated spark plug wires should be replaced.

DIAGNOSIS AND TESTING

AUDIO DIAGNOSTIC TEST PROCEDURES

CAUTION: The CD player will only operate between approximate temperatures of -23°C and +65°C (-10°F and +145°F).

Whenever a radio malfunction occurs;

- (1) First check FUSES:
 - (a) Power Distribution Center (PDC), Interior lamp fuse, M1 - Radio Memory Feed
 - (b) Fuse Block:
 - (I) Fuse 12, Illumination in the fuse block
 - (II) Fuse 16, Ignition feed in the fuse block

NOTE: The vehicles are shipped with the INTERIOR LAMP fuse disconnected.

- (2) Verify, the radio wire harness are properly connected before starting normal diagnosis and repair procedures. Refer to Audio Diagnostic Charts and/or Group 8W, Wiring Diagrams, Radio Section.

TESTING

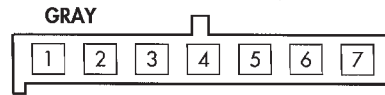
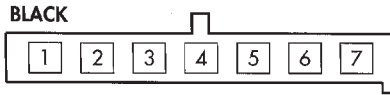
The antenna has a short cable which connects into the instrument panel harness. The connection is made on the right side of the instrument panel.

Antenna performance may be tested by substituting a known good antenna. It is also possible to check short or open circuits with an ohmmeter or continuity light once the antenna cable is disconnected from the radio as follows:

- (1) Continuity should be present between the antenna mast and radio end pin of antenna cable plug (Fig. 1).
- (2) No continuity should be observed or a very high resistance of several megohms between the ground shell of the connector and radio end pin.

DIAGNOSIS AND TESTING (Continued)

RADIO CONNECTORS

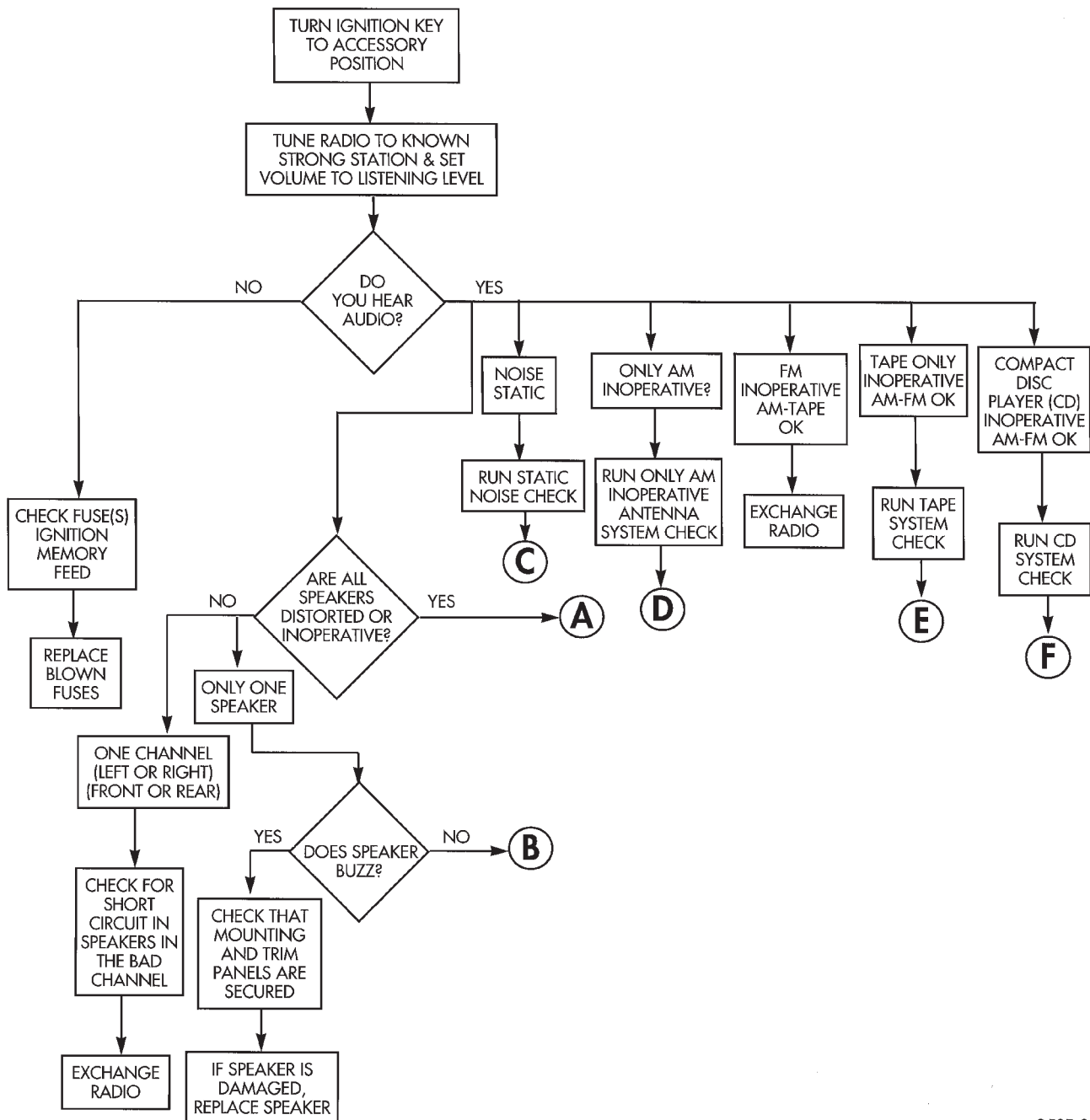


VIEW FROM WIRE END

LEGEND:

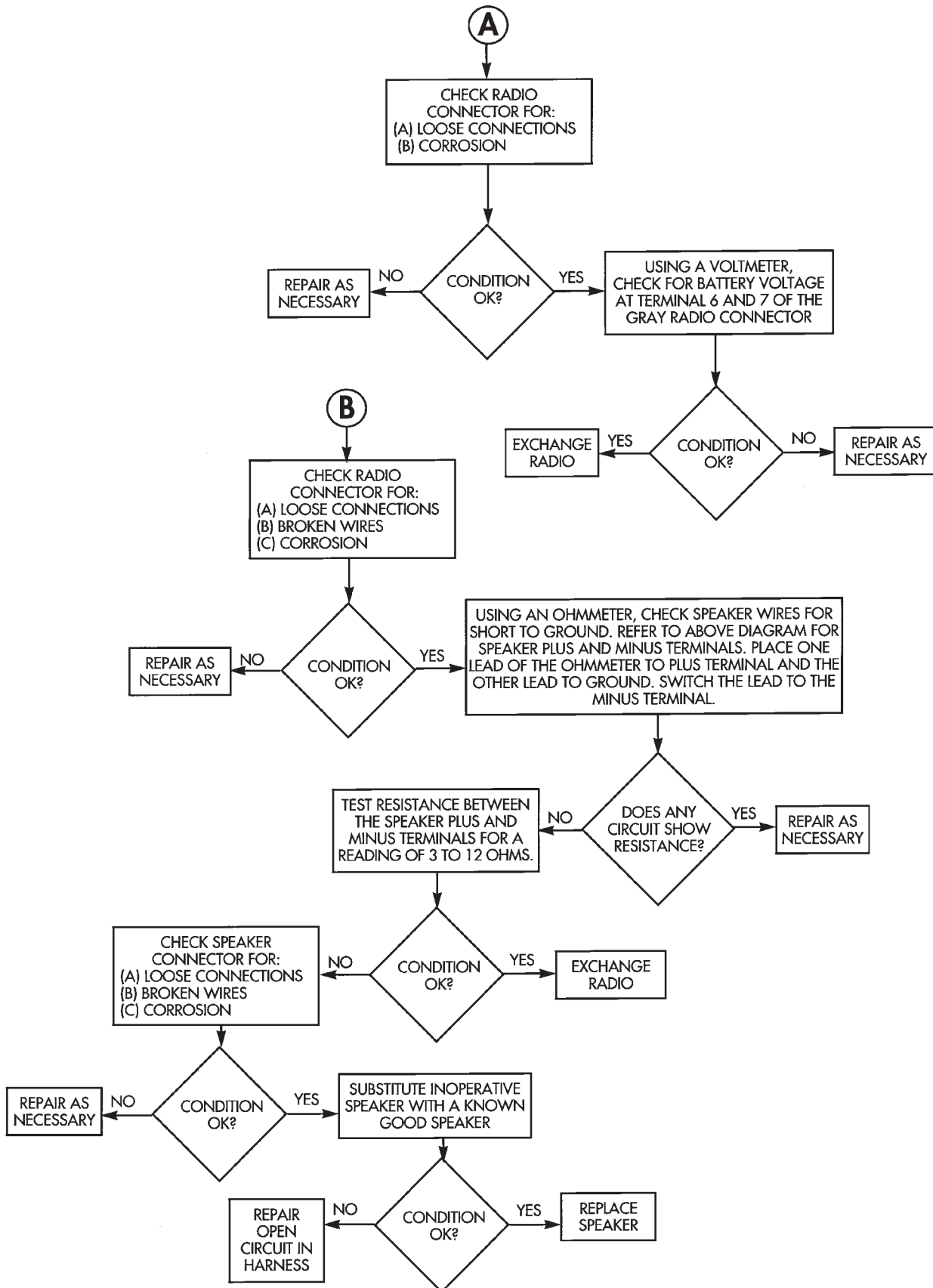
- 1 - AMP ON-OFF SIGNAL/ANT UP SIGNAL
- 2 - LEFT REAR SPEAKER FEED (+)
- 3 - RIGHT REAR SPEAKER FEED (+)
- 4 - LEFT FRONT SPEAKER FEED (+)
- 5 - RIGHT FRONT SPEAKER FEED (+)
- 6 - LEFT REAR SPEAKER RETURN (-)
- 7 - RIGHT REAR SPEAKER RETURN (-)

- 1 - RADIO MUTE
- 2 - LEFT FRONT SPEAKER RETURN (-)
- 3 - RIGHT FRONT SPEAKER RETURN (-)
- 4 - MARKER — (HEAD/PARK LAMPS)
- 5 - DIMMER — (PANEL, LAMPS, VARIABLE)
- 6 - ACCESSORY — (SWITCHED B+)
- 7 - BATTERY — (MEMORY)

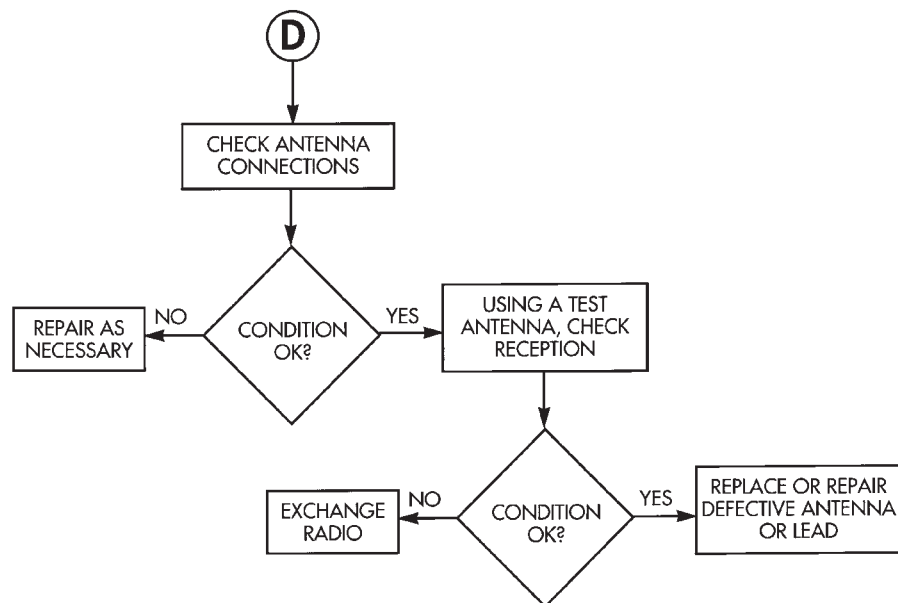
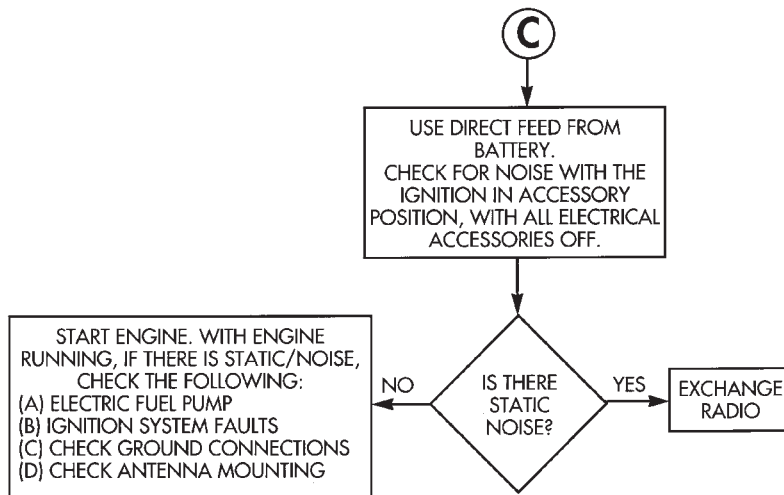


958F-3

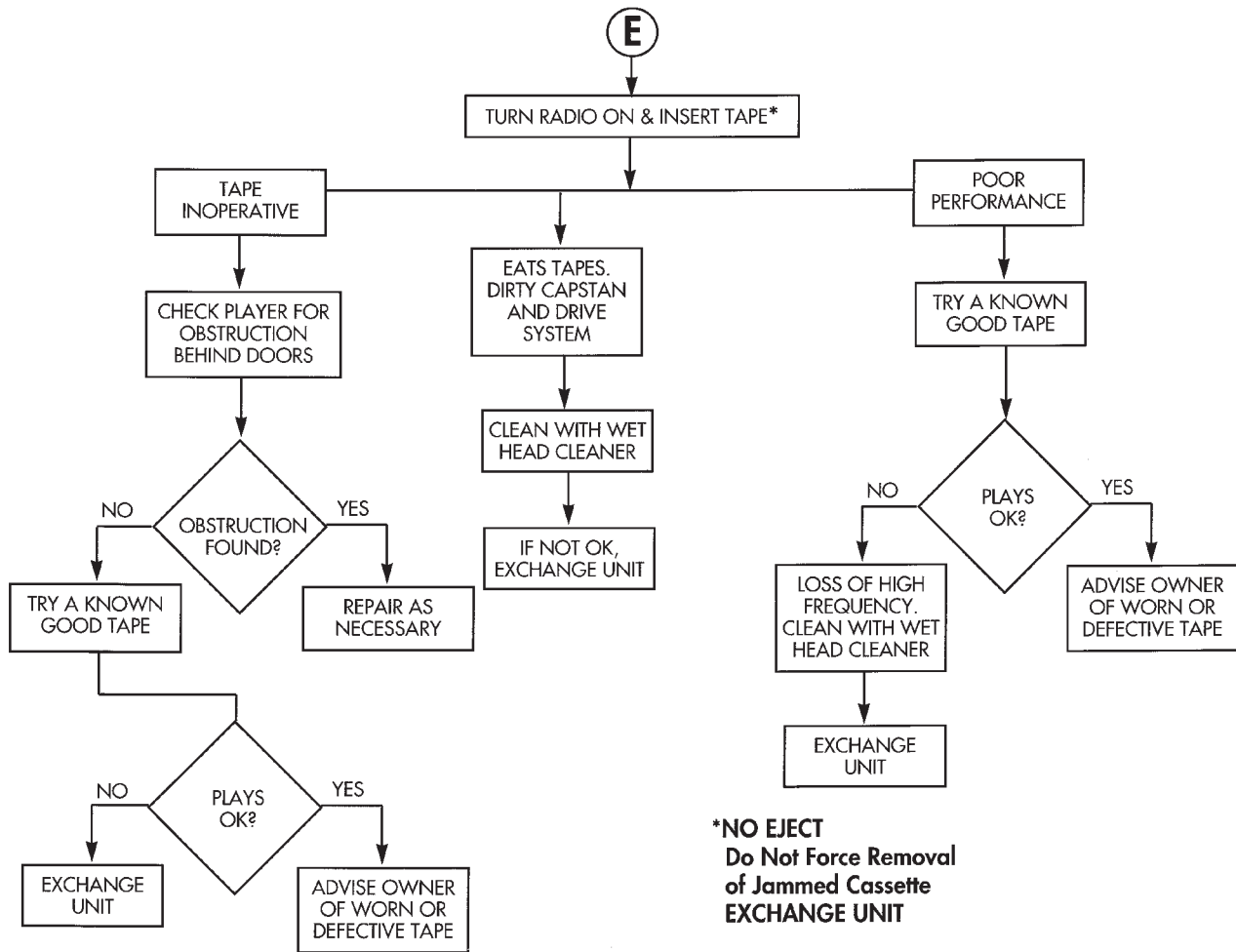
DIAGNOSIS AND TESTING (Continued)



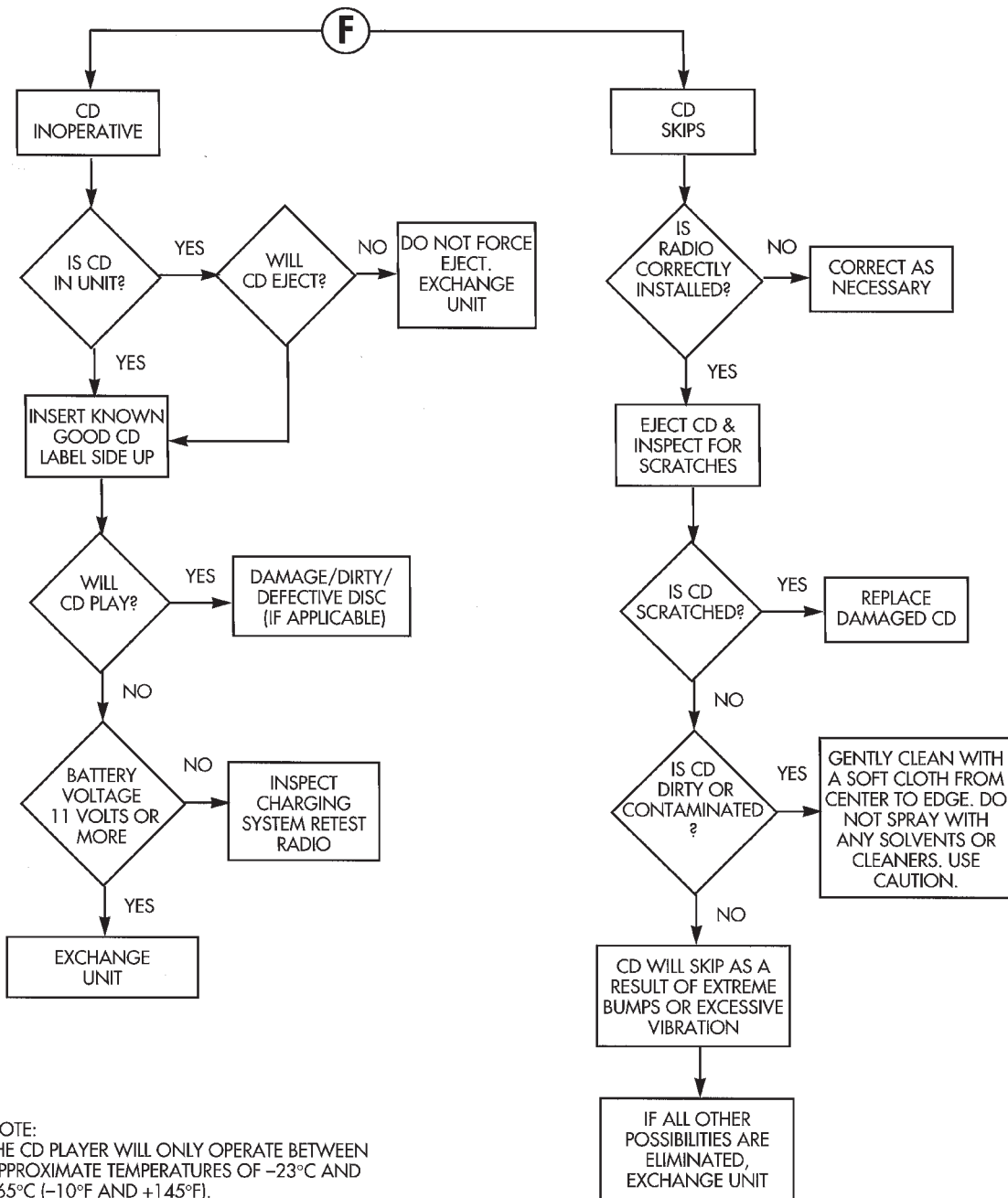
DIAGNOSIS AND TESTING (Continued)



DIAGNOSIS AND TESTING (Continued)



DIAGNOSIS AND TESTING (Continued)



NOTE:
THE CD PLAYER WILL ONLY OPERATE BETWEEN APPROXIMATE TEMPERATURES OF -23°C AND +65°C (-10°F AND +145°F).

DIAGNOSIS AND TESTING (Continued)

(3) Continuity should be observed between the ground shell of the connector and the mounting hardware on the vehicle antenna. The wheel well splash shield must be removed for access to the antenna that is mounted on load beam.

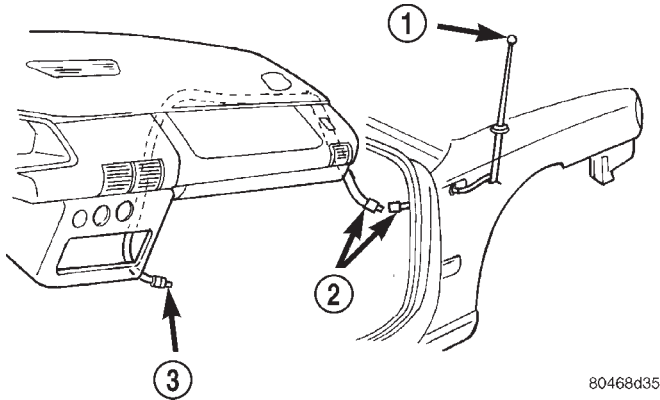
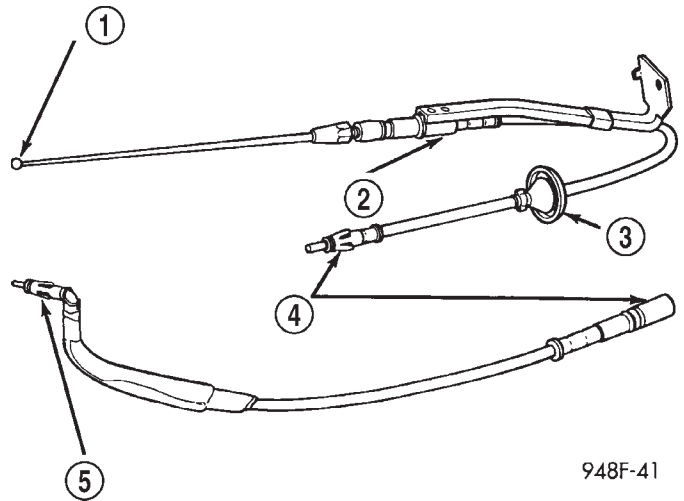


Fig. 1 Antenna Test Points

- 1 - TIP OF MAST TEST POINT
- 2 - DISCONNECT TEST POINTS
- 3 - RADIO END PIN TEST POINT

80468d35



948F-41

Fig. 2 Antenna Bench Test Points

- 1 - TIP OF MAST
- 2 - ANTENNA BODY
- 3 - PLUG
- 4 - CONNECTORS
- 5 - RADIO LEAD IN

BENCH TEST FOR ANTENNA MALFUNCTION

It is also possible to check short or open circuits with an ohmmeter or continuity light once the antenna has been removed from the vehicle.

(1) Continuity should be present between the tip of the mast and radio lead in (Fig. 2).

(2) No continuity should be observed or a very high resistance of several megohms between the ground shell of the connector and radio end pin.

(3) Continuity should be observed between the ground shell of the connector and the mounting bracket. **Wiggle cable over its entire length to reveal intermittent short or open circuits during step 1, 2 and 3.**

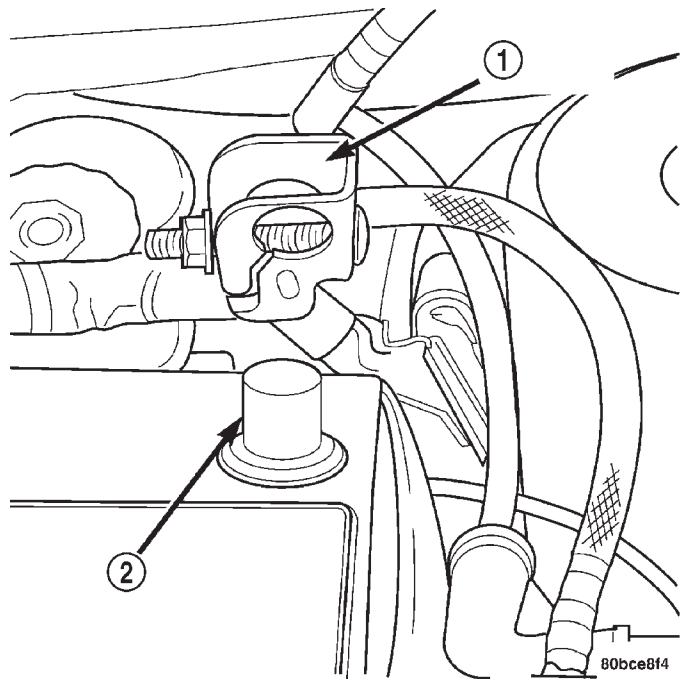
REMOVAL AND INSTALLATION

CD CHANGER

REMOVAL

(1) Disconnect and isolate the battery negative cable (Fig. 3).

(2) Using a trim stick (special tool #C-4755), gently pry out on CD changer bezel and remove.



80bce8f4

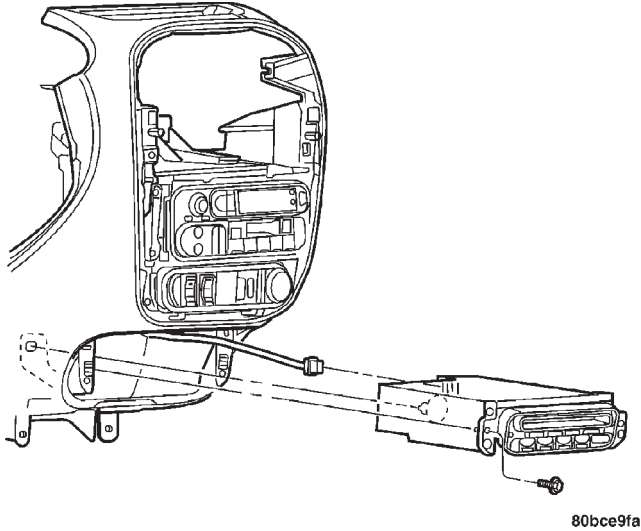
Fig. 3 Battery Negative Cable Remove/Install

- 1 - NEGATIVE CABLE
- 2 - NEGATIVE BATTERY POST

REMOVAL AND INSTALLATION (Continued)

(3) Remove two retaining screws to CD changer (Fig. 4).

(4) Pull CD changer out of instrument panel and disconnect harness connector from rear of changer (Fig. 4).



80bce9fa

Fig. 4 CD Changer Remove/Install

(5) Remove CD changer from vehicle.

INSTALLATION

For installation, reverse the above procedures.

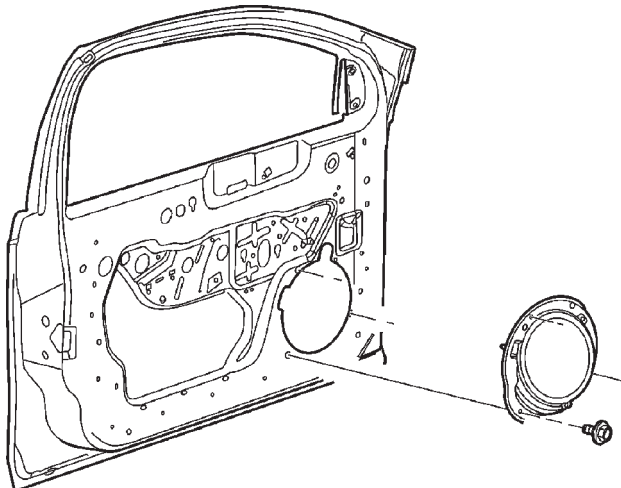
FRONT DOOR SPEAKER

REMOVAL

(1) Disconnect and isolate the battery negative cable (Fig. 3).

(2) Remove front door trim panel, refer to Group 23 Body, Front Door Trim Panel Removal and Installation.

(3) Remove three speaker retaining screws (Fig. 5).



80bce9fe

Fig. 5 Front Door Speaker Remove/Install

(4) Remove speaker assembly and disconnect wire connector from rear of speaker.

(5) Remove speaker from vehicle.

INSTALLATION

For installation reverse the above procedures.

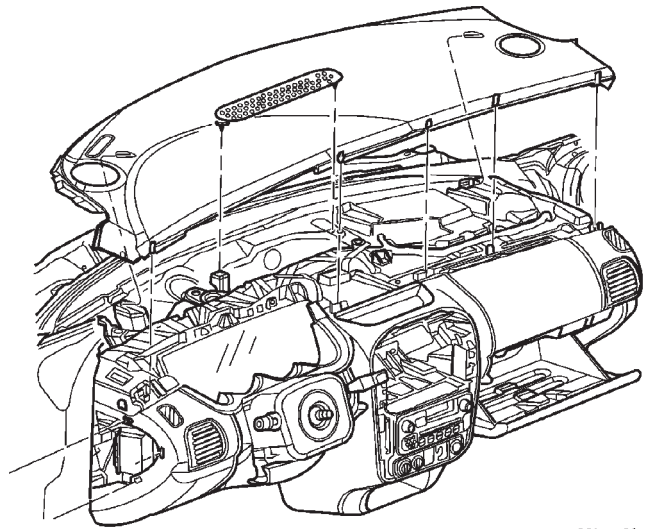
INSTRUMENT PANEL SPEAKER(S)

REMOVAL

(1) Disconnect and isolate the battery negative cable (Fig. 3).

(2) Remove instrument panel top cover. Refer to Group 8E Instrument Panel Systems, Instrument Panel Top Cover Removal and Installation.

(3) Remove speaker retaining screws (Fig. 6).



80bce9fc

Fig. 6 Instrument Panel Speakers Remove/install

(4) Remove speaker and disconnect wire connector.

INSTALLATION

For installation reverse the above procedures.

MAST and ANTENNA ASSEMBLY

REMOVAL

(1) Remove antenna mast by unscrewing mast from antenna body (Fig. 7).

(2) Locate the antenna lead disconnect in the instrument panel wire harness above the right cowl trim panel. Disconnect the antenna cable from the instrument panel cable lead.

(3) Unfasten push pins from the rear of the plastic inner fender shield and move shield to gain access to mounting screws (Fig. 8).

(4) Remove mounting screws and remove antenna base and cable assembly from under the fender.

REMOVAL AND INSTALLATION (Continued)

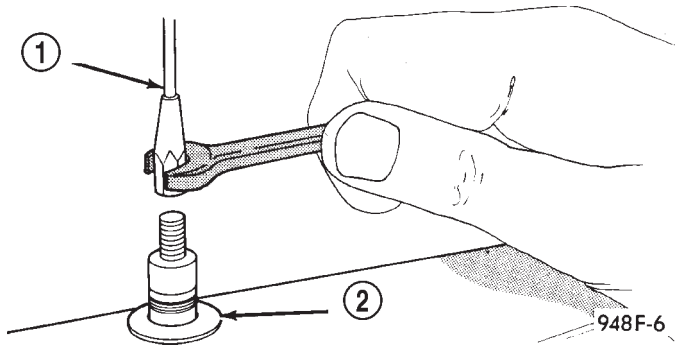


Fig. 7 Antenna Mast Removal - Typical

- 1 - ANTENNA MAST
- 2 - ANTENNA ADAPTER

INSTALLATION

- (1) Align antenna adapter tongue with groove in the fender hole and push adapter into fender.
- (2) From under the fender, push the antenna base and cable assembly through the adapter in the fender. Tighten mounting screws to 7 N·m (75 in. lbs.).
- (3) Seat the grommet in the side panel and connect the cable to the instrument panel harness connector.
- (4) Install the plastic inner fender shield.
- (5) Connect the antenna cable to the instrument panel cable lead.
- (6) Install right cowl side trim panel.

RADIO

REMOVAL

- (1) Disconnect and isolate the battery negative cable (Fig. 3).
- (2) Remove instrument panel center bezel. Refer to Group 8E Instrument Panel Systems, Instrument Panel Top Cover Removal and Installation.
- (3) Remove four mounting screws on the radio and pull out of instrument panel (Fig. 9).

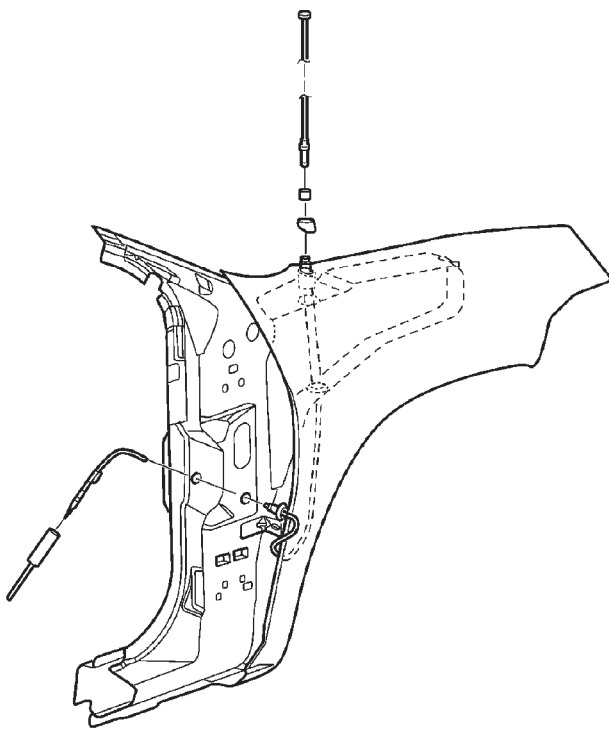


Fig. 8 Mast and Antenna Assembly Mounting

80bce9f5

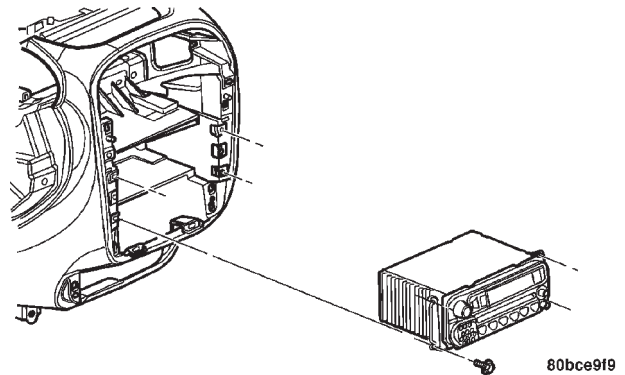


Fig. 9 Radio Remove/Install

- (4) Disconnect wiring and antenna cable and remove ground wire from radio.
- (5) Remove radio from vehicle.

INSTALLATION

For installation reverse the above procedures.

REMOVAL AND INSTALLATION (Continued)

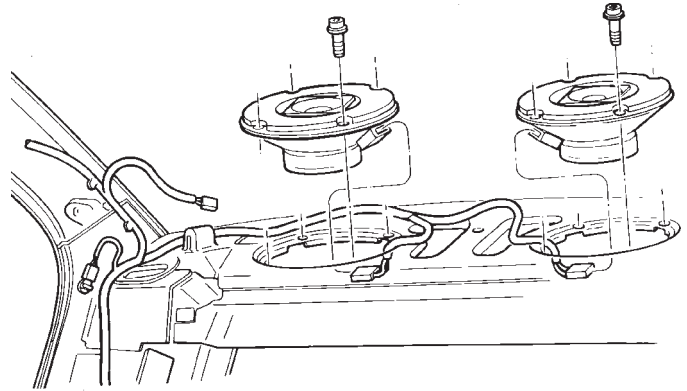
REAR SHELF SPEAKER(S)

REMOVAL

- (1) Disconnect and isolate the battery negative cable (Fig. 3).
- (2) Remove Rear Seat Cushion, Seat Back, and Rear Shelf Panel. Refer to Group 23 Body, for Removal and Installation.
- (3) Remove four speaker retaining screws (Fig. 10).
- (4) Remove speaker and disconnect wire connector.
- (5) Remove speaker(s) from vehicle.

INSTALLATION

For installation reverse the above procedures. Position speakers so that the wire connectors are pointing to the center of vehicle.



948F-43

Fig. 10 Rear Shelf Speaker(s) Remove/Install